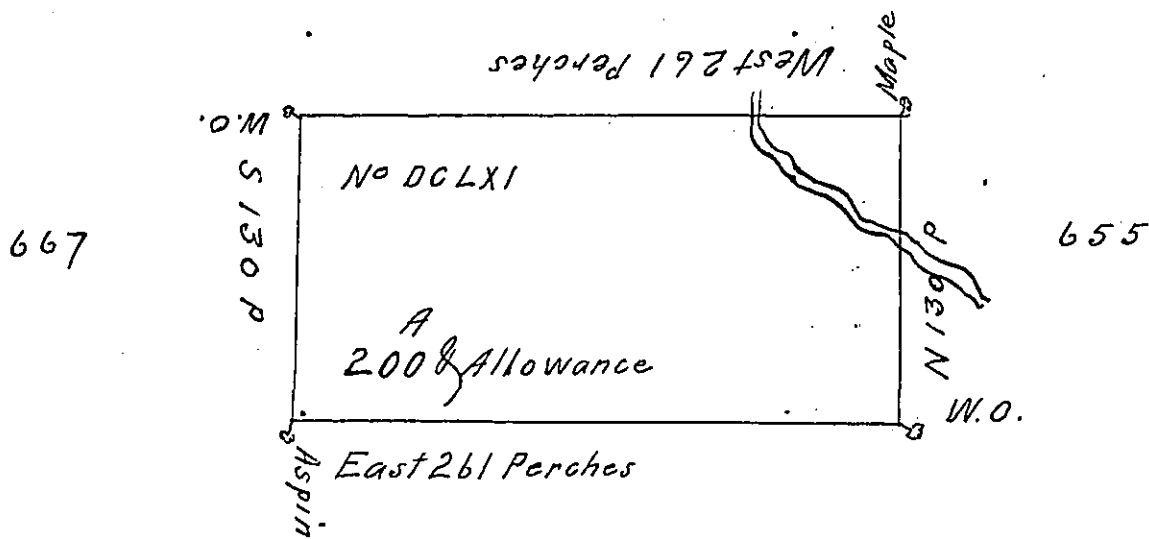


66 250 Acres



64 500 Acres

In pursuance of an Act of Gen Assembly of the State of Penn<sup>a</sup> passed the 24<sup>th</sup> day of February 1785. entitled "an Act for directing the Mode of Distributing the Donation Lands promised the Troops of This Commonwealth" and by order of the Surveyor Gen<sup>t</sup> with the Approbation of the Hon<sup>l</sup> the Executive Council I have Survey'd on the 18<sup>th</sup> July 1785. the above described Tract of Two hundred Acres of Land and Allowance of Six p<sup>ct</sup> for roads &c. N<sup>o</sup> DCLXI. Situate in District N<sup>o</sup> 4 on the west side of the Alligany River in the County of Westmoreland.

A Henderson D.S.

To John Lukens Esquire  
 Surveyor General }

IN TESTIMONY that the above is a copy of the original remaining on file in the Department of Internal Affairs of Pennsylvania, made conformably to an Act of Assembly approved the 16th day of February, 1833, I have hereunto set my Hand and caused the Seal of said Department to be affixed at Harrisburg, this Fifteenth day of April 1908

*Henry Howard*  
 Secretary of Internal Affairs.